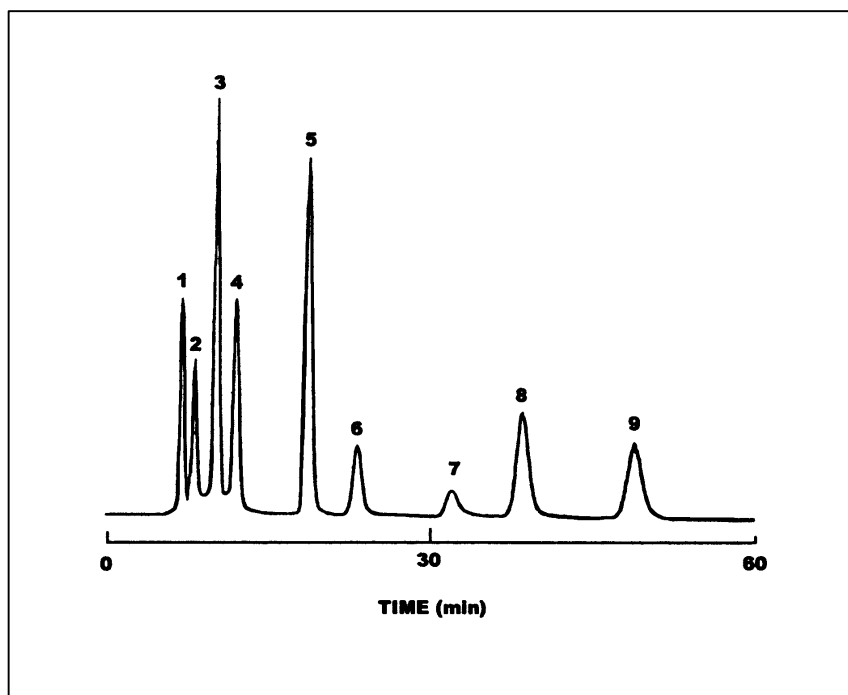


## ANALYSIS OF CARBOHYDRATES BY HPLC



### Compounds :

- |              |                |
|--------------|----------------|
| 1 - Rhamnose | 6 - Maltose    |
| 2 - Xylose   | 7 - Melibiose  |
| 3 - Fructose | 8 - Melezitose |
| 4 - Glucose  | 9 - Raffinose  |
| 5 - Sucrose  |                |

Injected Quantities : 10 nmoles each

### Chromatographic conditions :

*Column* : Shodex Asahipak NH<sub>2</sub>-50

*Mobile Phase* : Isocratic mixture AcCN/Water,  
(80/20).

*Flow Rate* : 1.0 ml/min.

*ELSD Temperature* : 45°C

**EUROSEP Instruments**

Tel. : +33(0)1 34 22 95 22 - Fax : +33(0)1 34 22 95 32

E-Mail: [eurosep@eurosep.com](mailto:eurosep@eurosep.com) - Internet <http://www.eurosep.com>