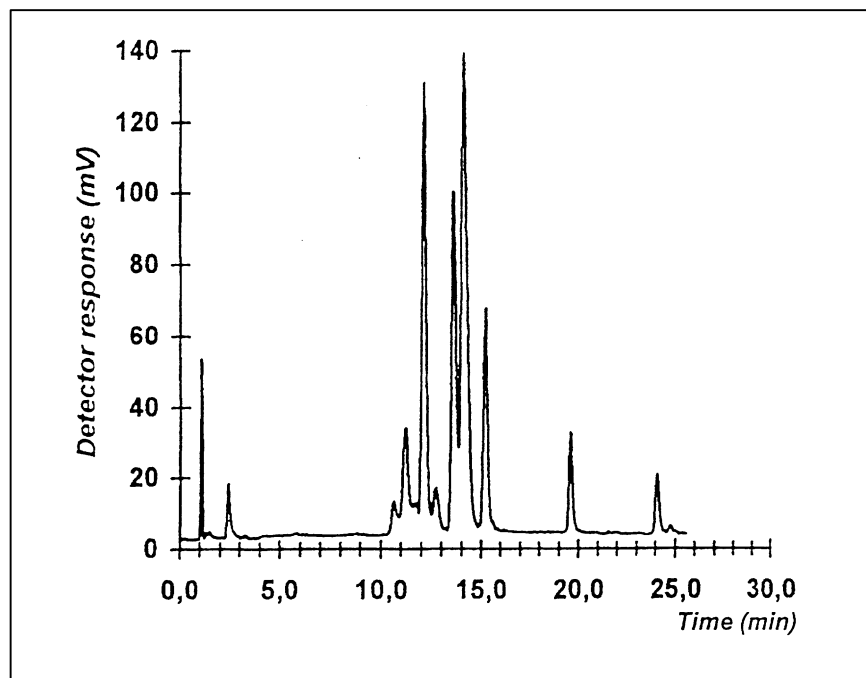


## Analysis of Commercial Ceramides by Non-Aqueous RPLC with ELSD



Analysis of all the ceramides  
*Chromatographia* Vol. 49, N° 5/6, March 1999.

The ceramides include a large variety of compounds with structures are highly dependent on their origins. In mammalian body ceramides are present as glycosceramides in all cellular differentiation, ceramides undergo deglycosylation. In the most superficial layer of skin, the ceramides are amides comprising a fatty acid amidified by a sphingoid base. Due to the high hydrophobicity of ceramides, authors use non-aqueous reverse-phase (NARP) for their separation. The lack of suitable chromophore in ceramides does not allow the use of UV detection. Also the use of NARP with ELS detection is a good choice to analyse ceramides.

### Chromatographic conditions :

Column : Kromasil C18 (125 x 2 mm, 5 $\mu$ m) 30°C

Flow Rate : 0.4 ml/mn

Mobile phase A : ACN/THF 99/1

Mobile phase B : ACN/THF/PrOH, 39/1/60

Gradient : From B= 0% to B= 100 % in 30mn

Evaporation temperature : 35°C

### **EUROSEP Instruments**

Tel. : +33(0)1 34 22 95 22 - Fax : +33(0)1 34 22 95 32

E-Mail: [eurosep@eurosep.com](mailto:eurosep@eurosep.com) - Internet <http://www.eurosep.com>