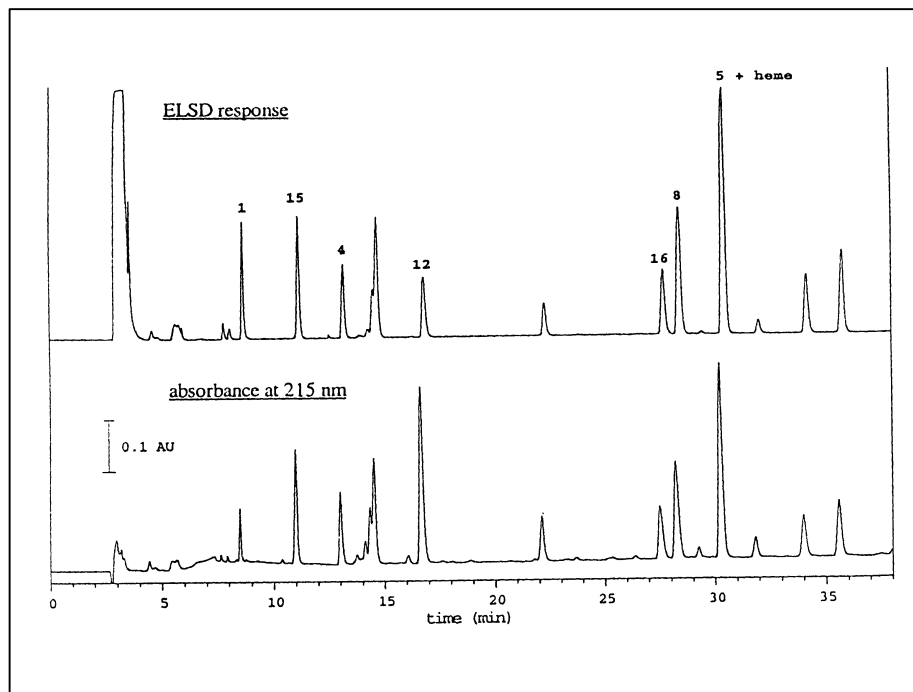


RP-HPLC Peptide Mapping of Proteins with an ELS Detector



Comparison of UV and ELSD response of tryptic map of cytochrome c
Jacob Bongers, Ted K. Chen - *J.liq. Chrom. & Rel. Technol.*, 23(6),
925-933 (2000)

In pharmaceutical application peptide mapping is used as a "finger-printing" technique to detect post-translational modifications and other small changes to recombinant pharmaceuticals proteins. For the determination of tryptic map profile of different proteins like a cytochrome, the use of RP-HPLC with coupling UV and ELS detection is a good analytical technique procedure.

Chromatographic conditions :

Column : Vydac 218TP54 C18 (4.6 x 250 mm) (45 °C).

Flow Rate : 1 ml/mn

Mobile phase A : 0.1% TFA/H₂O

Mobile phase B : 0.1% TFA/20%H₂O/79.9%ACN

Gradient:

t	0	5	30
A%	0	85	60
B%	0	15	40

Nebulizer temperature : 35°C

Evaporation temperature : 40°C

Pressure : 1.5 bars

EUROSEP Instruments

Tel. : +33(0)1 34 22 95 22 - Fax : +33(0)1 34 22 95 32

E-Mail: eurosep@eurosep.com - Internet <http://www.eurosep.com>