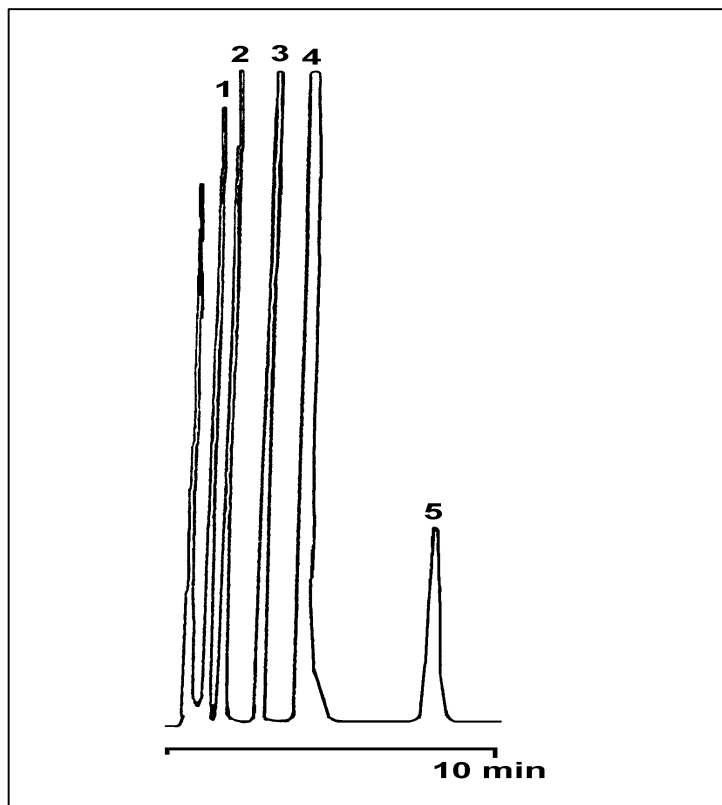


DETECTION OF DRUGS BY SFC



Laposse, Elfakir, Morin-Allary, Dreux
Journal of High Resolution Chromatography, Vol. 15, May 1992.

EUROSEP Instruments

Tel. : +33(0)1 34 22 95 22 - Fax : +33(0)1 34 22 95 32

E-Mail: eurosep@eurosep.com - Internet <http://www.eurosep.com>

The coupling of Carbon dioxide supercritical fluid chromatography (SFC) with ELSD is a new fluid of investigation. The ELSD nebulizer acts as a capillary restrictor. The temperature of the nebulizer and of the evaporation chamber allow the use of a wide range of modifiers such as MeOH in supercritical CO₂. Detection limit is about 5 to 10 times higher than with HPLC.

Chromatographic conditions :

Column : Zorbax TMS (250x4.6 mm)

Mobile Phase : CO₂/MeOH (90/10)

Column Temperature : 45°C

Compounds

- | | |
|-------------------|------------------|
| 1- Phenylbutazone | 2- Phenobarbital |
| 3- Caffeine | 4- Caffeine |
| 5- Prednisolone | |