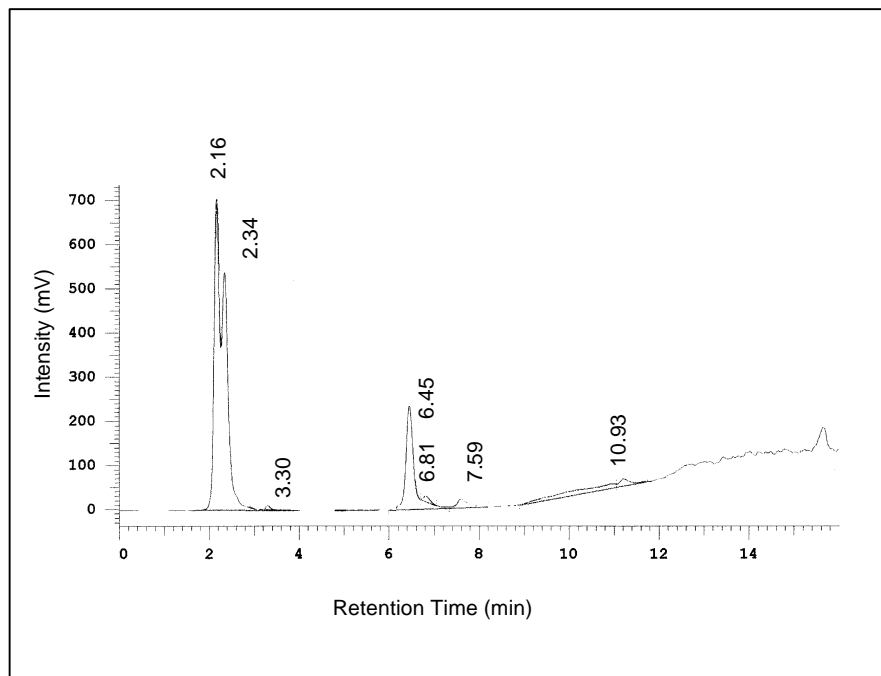


Determination of Skin Lipid Classes



Analysis of skin lipids (Sebum extract) DDL31 - EUROSEP Instruments

The physical skin barrier is composed of lipid molecules organized in multilamellar structures. Small differences in lipid composition may cause drastic changes in the barrier properties. For that reason, precise and quantitative knowledge of lipid composition becomes a matter of importance for the understanding of skin barrier function in normal and diseased skin. Such knowledge might also facilitate the design of topical formulations to compensate for barrier defects or to control drug penetration through human skin. This kind of analysis is carried out with an HPLC method with ELSD detection.

Chromatographic conditions :

Column : LiChrosphere 100 DIOL(250x4 mm)

Injection Volume : 20 μ l

Flow Rate : 1 ml/min

Mobile Phase : A: hexane 100 %

B: hexane/isopropanol/n-butanol (77.5/12.5/10)%

Gradient :

T	0	5	12	15	16
B%	2	20	100	100	2

Nebulizer temperature : 35°C

Evaporation temperature : 45°C

EUROSEP Instruments

Tel. : +33(0)1 34 22 95 22 - Fax : +33(0)1 34 22 95 32

E-Mail: eurosep@eurosep.com - Internet <http://www.eurosep.com>