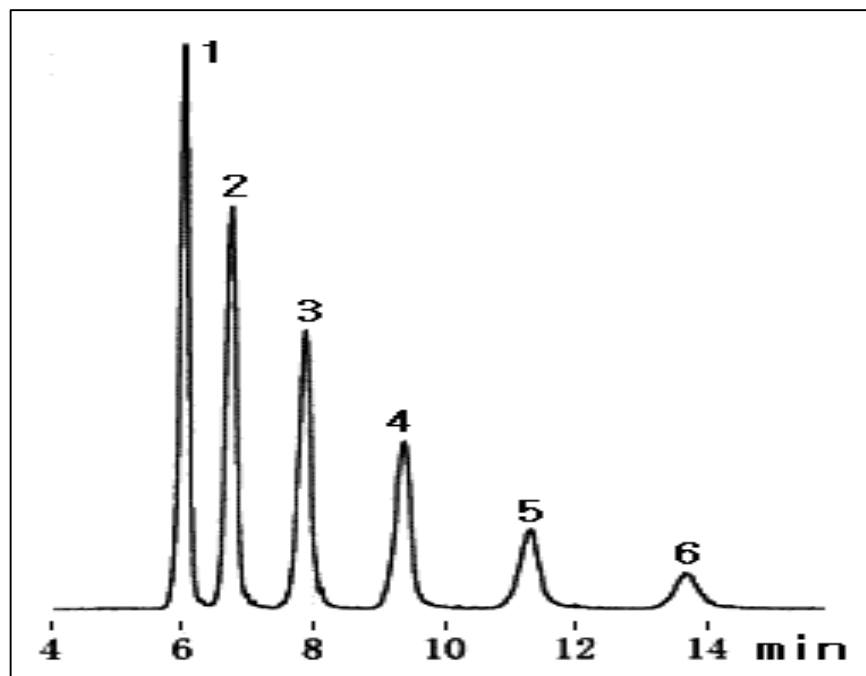


Determination of Chitosan-Oligosaccharides



Data from SHODEX (<http://www.sdk.co.jp/shodex/english>)

According to the kinds of sugars (monomer, malodextrines, chitosan...), several types of columns are employed. Until recently the most popular universal chromatographic detection system was RI. But refractometry has some limitations : control and regulation of the temperature, low sensitivity, and no possibility to use elution gradient. The use of ELSD detection solves this problem to allow the use of elution gradient with a good sensitivity. From dimer to hexamer, the determination of chitosan-oligosaccharide is carried out using Amino-polymeric column and ELSD.

Chromatographic conditions :

Column : Shodex Asahipak NH2P-50 4E

Injection Volume : 20 μ l

Flow Rate : 1 ml/min

Mobile Phase : CH₃CN/H₂O (70/30)

Nebulizer temperature : 30°C

Evaporation temperature : 40°C

EUROSEP Instruments

Tel. : +33(0)1 34 22 95 22 - Fax : +33(0)1 34 22 95 32

E-Mail: eurosep@eurosep.com - Internet <http://www.eurosep.com>