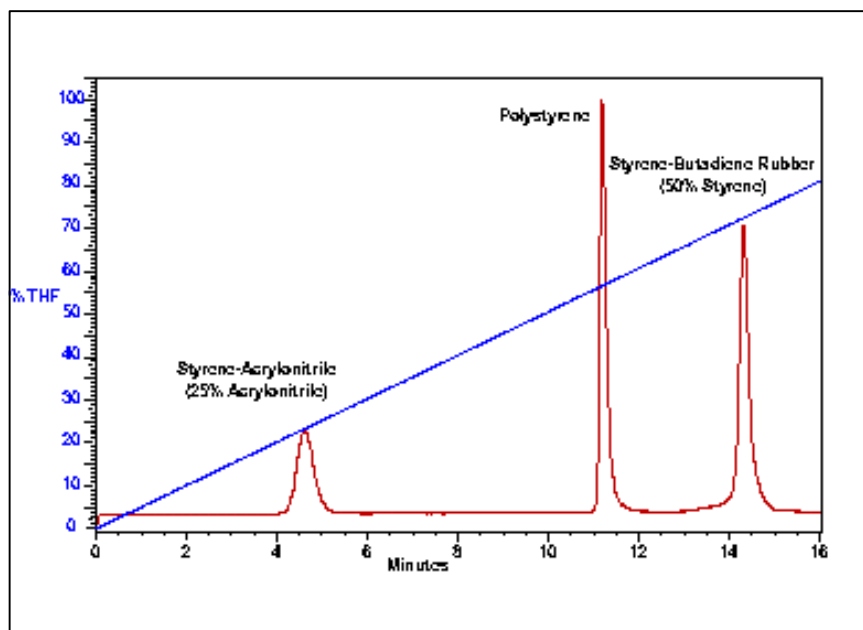


Gradient Analysis of Polymer Blends with ELSD Detection



Data from Waters SA (<http://www.waters.com>)

EUROSEP Instruments

Tel. : +33(0)1 34 22 95 22 - Fax : +33(0)1 34 22 95 32

E-Mail: eurosep@eurosep.com - Internet <http://www.eurosep.com>

In recent years, there has been increased interest in using gradient HPLC techniques, such as Gradient Poly Elution Chromatography (GPEC), with polymers for determining the composition of polymer blends. Depending upon the gradient and column selected, the separations obtained depend on molecular weight or one adsorption mechanisms. The use of ELSD allows to perform solvent gradients with an universal detector and observes UV and non UV absorbing polymer samples without baseline disturbances from the solvent gradient.

Chromatographic conditions :

Column : Symmetry Shield™ C8 Column (3.9x150mm)

Injection Volume : 20µl

Flow Rate : 1 ml/mn

Mobile Phase A : ACN; B : THF

Gradient:

From 100% A to 100% B over 20 min

Evaporation temperature : 30°C