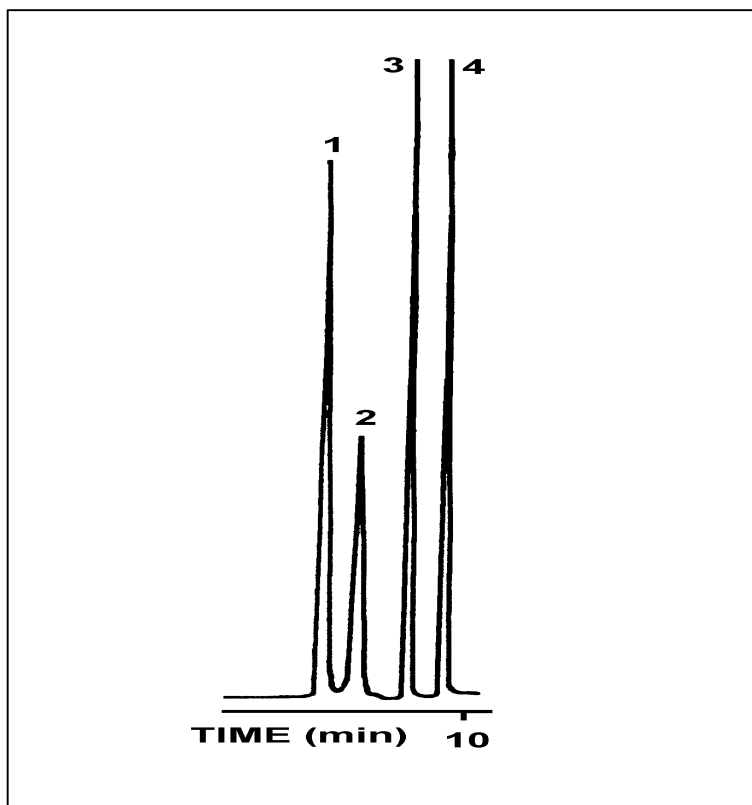


DETECTION OF CARBOHYDRATES BY SFC



The coupling of Carbon dioxide supercritical fluid chromatography (SFC) with ELSD is a new fluid of investigation. The ELSD nebulizer acts as a capillary restrictor. The temperature of the nebulizer and of the evaporation chamber allow the use of a wide range of modifiers such as MeOH in supercritical CO₂. Detection limit is about 5 to 10 times higher than with HPLC.

Chromatographic conditions :

Column : Lichrosorb -CN

Mobile Phase : Gradient CO₂/MeOH

5 min(94/6), then (82/18) in 4 min

Column Temperature : 40°C

Compounds :

1- Fructose

2- Glucose

3- Sucrose

4- Raffinose

Laposse, Elfakir, Morin-Allary, Dreux
Journal of High Resolution Chromatography, Vol. 15, May 1992.

EUROSEP Instruments

Tel. : +33(0)1 34 22 95 22 - Fax : +33(0)1 34 22 95 32

E-Mail: eurosep@eurosep.com - Internet <http://www.eurosep.com>