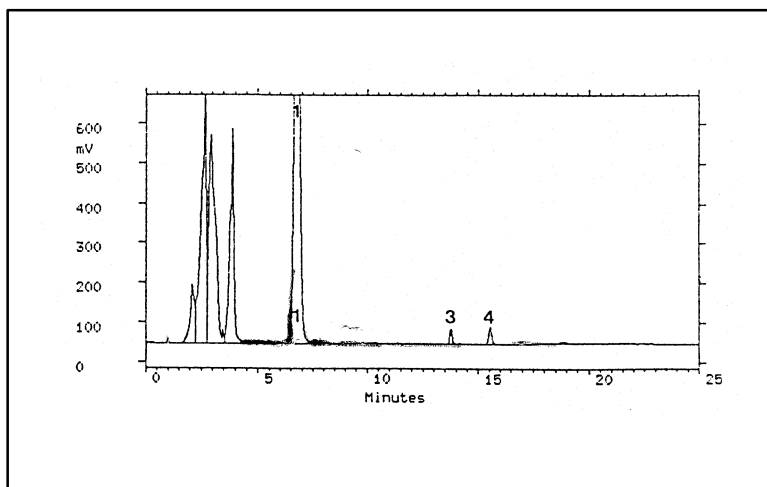


Determination of Saponins from *Hedera Helix*



50% methanolic extract of leaves from *Hedra helix L.*

F. Crespin; M. Calmes; R. Elias; C. Maillard; G. Balansard
Chromatographia Vol. 38 N° 3/4, Feb 1994.

1: Hederasaponin C; 3: Hederasaponin B; 4: α hederin

HPLC is currently used for the qualitative and quantitative determination of constituents in crude drugs and extracts. The detection method most commonly used is UV spectroscopy. But, for these compounds without a chromophore, the limiting factor is detection. Moreover in the case of vegetable extracts, it is often necessary to use gradient elution. However at low wavelength, there is a drift of baseline and therefore a decrease of sensitivity. Then the use of a ELSD detector solves this problem with a better sensitivity and saving of time by using elution gradient.

Chromatographic conditions :

Column : Bondclone C18, 10 μ m, 3.9x300 mm (interchim).

Mobile Phase : A:H₂O B:ACN

Flow Rate : 1 ml/min.

Gradient:

Time	0	5	7	17	19	25
A%	65	65	37	37	65	65

Evaporation Temperature : 45°C.

EUROSEP Instruments

Tel. : +33(0)1 34 22 95 22 - Fax : +33(0)1 34 22 95 32

E-Mail: eurosep@eurosep.com - Internet <http://www.eurosep.com>