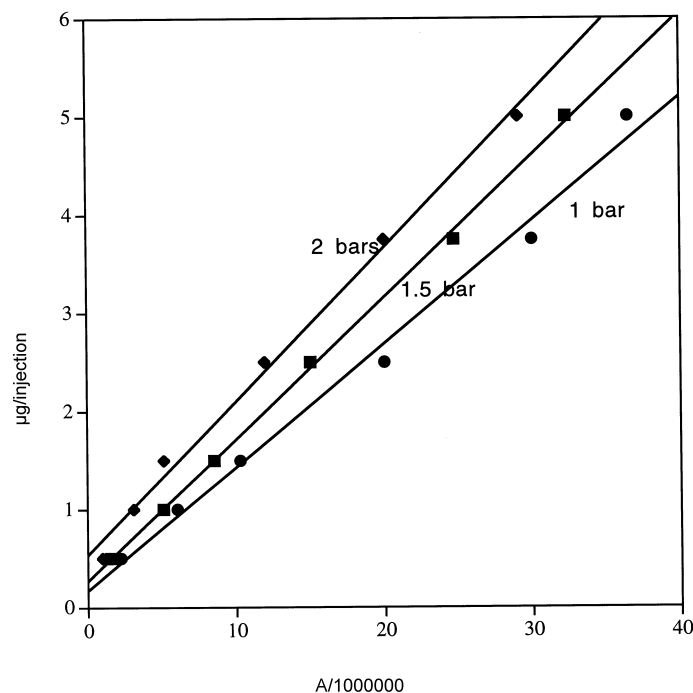


INFLUENCE OF NEBULISATION GAS ON THE DETECTION SENSITIVITY



Calibration curves for cholesterol, influence of gas pressure of nebulization, adapted from Leray C., unpublished data.

The authors have shown clearly the influence of gas pressure used for the nebulisation on the detection sensitivity of A- tocopherol which was better when measured at 1 bar in these experimental conditions. The temperature variation was shown to have only a slight influence but optimum results were observed at 60°C. The detector response was found to be non linear, the slope being .791 at 1 bar in a log/log plot with standards in the range .2-3 µg per injection.

Chromatographic conditions :

Column : Lichrosorb RP18, 250x4.6 mm, 5 µm.

Mobile Phase : Isocratic mixture of MEOH/Water, (98/2).

Flow Rate : 1.5 ml/min.

Evaporation Temperature : 60°C.

EUROSEP Instruments

Tel. : +33(0)1 34 22 95 22 - Fax : +33(0)1 34 22 95 32

E-Mail: eurosep@eurosep.com - Internet <http://www.eurosep.com>