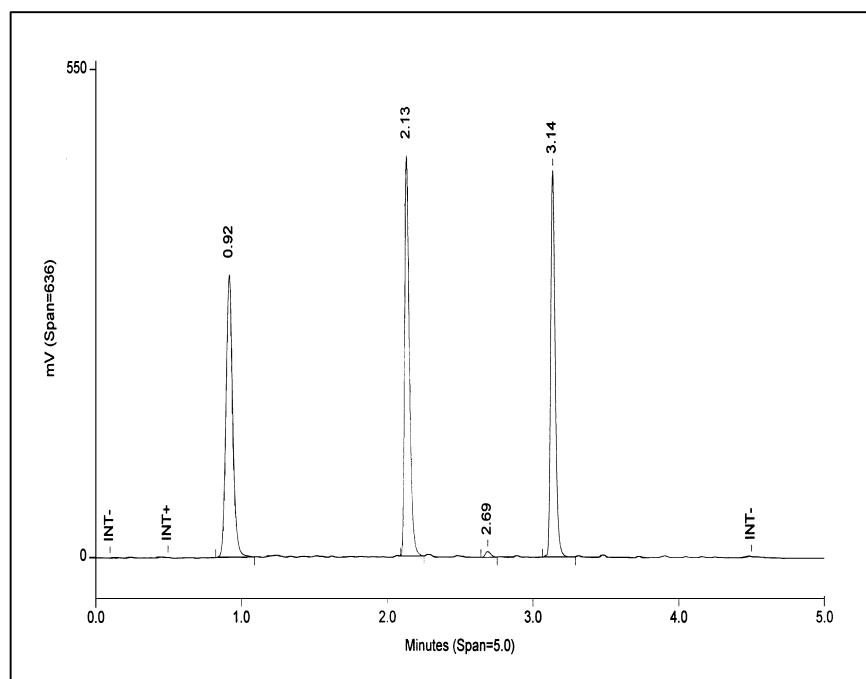


Determination of Pharmaceutical Compounds for Combinatorial Chemistry



When operating with a mixture of unknown compounds, as in combinatorial chemistry, because of a constant response factor, ELSD gives, in terms of relative mass a better estimation than the UV and MS detection. In addition ELSD allows as an universal detector the determination of all species.

Chromatographic conditions :

Column : Inertsil ODS2 150x4.6mm

Injection Volume : 20 μ l

Flow Rate : 1 ml/min

Mobile Phase : Linear elution gradient in 5 min
of H₂O/ACN (95/5) to H₂O/ACN (5/95)

Evaporation Temperature : 35°C

EUROSEP Instruments

Tel. : +33(0)1 34 22 95 22 - Fax : +33(0)1 34 22 95 32

E-Mail : eurosep@eurosep.com - Internet <http://www.eurosep.com>