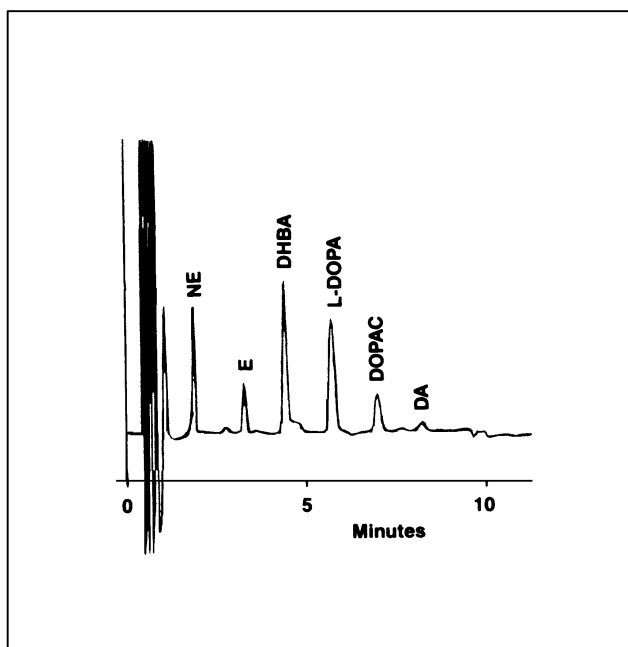


DETERMINATION OF PLASMA CATECHOLAMINES BY LC/ECD



Chromatogram of a plasma sample.

Liquid chromatography with electrochemical detection is a cost-effective and reliable means for measuring plasma catecholamines levels.

Because of the unique coulometric design of the Coulochem Detector, virtually 100% of each compound is either oxidized or reduced by each of its electrodes. The curve opposite shows the behavior of the catecholamines to oxidation and/or reduction potentials.

Chromatographic conditions :

Column : ESA HR80, 3 μ m, 150x4.6mm

Mobile Phase : Cat-A-Phase

Flow Rate : 1mL/min.

Injection Volume : 20 μ L

Internal standard

DHBA (500 μ g)