



# Spotlight 5000

## Fiber Optic Light Source



The **Spotlight 5000** series is a complete range of high intensity cool light fiber optic generators. They have especially been designed for medical and industrial applications where a high light brightness and an excellent color rendering are requested.

The **Spotlight 5000** series is based on two different technologies of discharge lamps from 50W to 300W :

I The low pressure 50W metal halide lamp (Spotlight 5050) has an excellent luminous efficiency with a color temperature of 4250°K and a 2500 hour life time,

I The 100W-300W short arc xenon lamps with an ellipsoidal reflector and a color temperature of 5600°K (Spotlight 5100 to 5310).

The **Spotlight 5000** series can be supplied with fiber optic adaptors from Olympus, Storz, Wolf, ACMI, etc. and glass or liquid light guides. They all include a mechanical shutter to monitor the output intensity from 0% to 100% with no effect on

the color temperature and a timer on the front panel.

The modular design of the system allows a very simple servicing, especially for lamp replacement where no special expertise is required to optimize the optical alignment.

A "State of the Art" power supply gives very high technical performance, a very compact design and a total compatibility with the last CE regulations (PFC) needed for any industrial or medical application.

### **Technical Specifications**

I Discharge lamps from 50W to 300W with ellipsoidal reflector,  
I Compatible with glass or light guides from 100µm to 8mm,  
I Maximum light intensity up to 2500 Lumens (Spotlight 5310),  
I Light intensity is adjustable from 0% to 100% via a mechanical shutter,  
I Light color temperature up to 5600°K (xenon lamp),  
I In conformity with medical and industrial CE regulations.

## **APPLICATIONS**

- n *Medical and Industrial Endoscopy*
- n *Dental Diagnostic*
- n *Photo Optic Lighting*
- n *Fiber Optic Transmission*
- n *Headlight System*
- n *Scientific Instrumentation*
- n *Solar Simulation*
- n *UV Polymerisation*
- n *Visual Inspection*

**EUROSEP**

**Instruments**

# Spotlight 5000 Fiber Optic Light Source

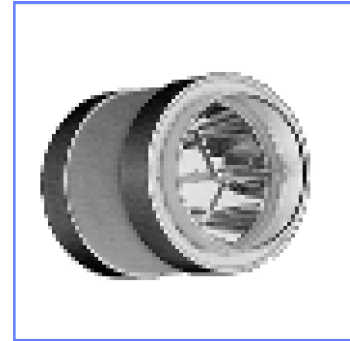
## DISCHARGE LAMP SPECIFICATIONS



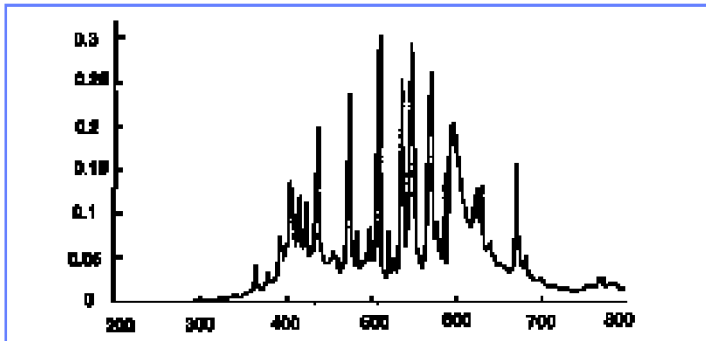
50W Metal Halide Lamp



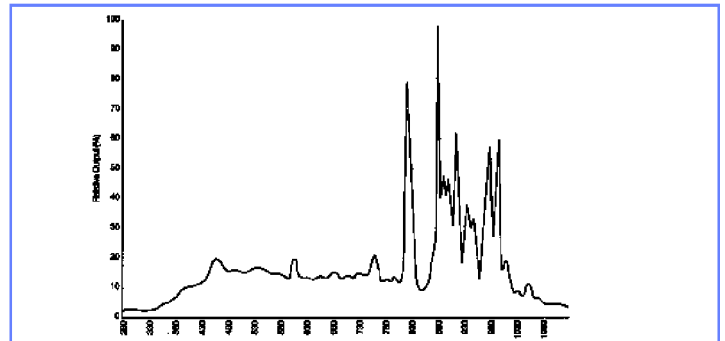
100W or 180W Xenon Lamp



300W Compact Xenon Lamp



50W Metal Halide Lamp Spectrum Distribution (in nm)



Xenon Lamp Spectrum Distribution (in nm)

## SPOTLIGHT 5000 SPECIFICATIONS

Spotlight Serie	Spotlight 5050	Spotlight 5100	Spotlight 5180	Spotlight 5310
Lamp Wattage (W)	50	100	180	300
Lamp type	Metal Halide	Xenon	Xenon	Compact xenon
Lamp Luminous Efficiency(Lm/W)	106	24	24	24
Color temperature (°K)	4250	5600	5600	5600
Lamp Life Time (H)	2500	500	500	500
Bundle Diameter (mm)	0,1 - 8	0,1 - 8	0,1 - 8	0,1- 8
Dimensions LxHxP (mm)	300x110x310	300x110x310	300x110x310	300x110x310
Weight (Kg)	3	4.2	4.2	4.5

## ACCESSORIES

Light guide End Fitting	Adaptor Reference	Light Guide and Headlight	Light Guide Reference
ACMI LUMATEC (5mm) LUMATEC (8mm) OLYMPUS STORZ WOLF	AT.ILL.NEZ.AC AT.ILL.NEZ.LU AT.ILL.NEZ.LU8 AT.ILL.NEZ.OL AT.ILL.NEZ.ST AT.ILL.NEZ.WO	<u>Flexible Glass Light Guide</u> Medical Application : see specific data sheet Industrial Application : - Diam. 4.5mm / L=1,80M <u>Liquid Light Guide (Lumatec)</u> - Diam. 5mm / L=1,00m - Diam. 8mm / L=1,00m <u>Headlight System</u> - Coaxial 90° headlight See specific data sheet	ATFIOP05ST ATFIOP04LIQ ATFIOP08LIQ SPOTILCO90

Specifications subject to change without notice. The mentioned marks are registered trade marks of their respective manufacturer.

Copyright© EUROSEP Instruments - 03/2006 -SPOTLIGHT5000.A1.2A

**EUROSEP** Instruments



47,avenue des Genottes  
95801 CERGY SAINT CHRISTOPHE - FRANCE  
Tel. : (33)1 34229522 - Fax : (33)1 34229532  
Email : eurosep@eurosep.com - Internet : //www.eurosep.com